

NATURAL STONE CATALOG

2021



GALLEGOS

MADE BY HAND.
BUILT WITH PASSION.

Welcome



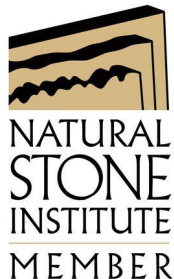
Thank you for choosing The Gallegos Corporation's Stone Yard to select your stone materials; we strive to stock the most comprehensive selection of materials in the region.

Our catalog is updated annually to provide clients with the most current information on the stones we regularly stock. Its purpose is to spur the imagination, and is not meant to be all encompassing of options or possibilities. The stone catalog represents only a small fraction of the materials that The Gallegos Corporation has direct access to provide.

It is also important to note that quarry conditions often change. Stones may change in color, texture, quality and availability. We are constantly monitoring the materials coming from our various vendors and for that reason, it is a good idea to reach out and contact one of our stone yard specialists. We are happy to assist in selecting, providing, and in some cases finding a better solution to your stone needs.

Our global relationships make possibilities near endless. We are always up to the challenge of sourcing the perfect stone for your unique application.

Thank you,
Frank Gutierrez
Regional President, Stone Yard/Quarries/Stone Sales



Commercial A Contractor
Natural Stone Fabricator



Table of Contents

Panel #	Stone Veneer Panel Name	Page	Panel #	Stone Veneer Panel Name	Page
301	Sebastian Sawn	16	354	Granite Squares and Rectangles	8
302	Alpina Moss	14	355	Flint Hills Gray Limestone	5
303	NorthStar	21	356	Flagg Creek Squares and Rectangles	10
304	Goldstone	20	357	McGregor Lake Ledge	22
305	Adobe Chopped	10	358	Flagg Creek Ledge Chopped and Stained	10
306	Rico Stack	21	359	Moonlight Basin	23
308	Desert Tortoise	20	360	Castle Rock Ledge	23
309	Graystone	19	361	Moose Mountain	23
310	Skyline	19	362	Flint Hills Mottled Limestone	4
311	Beaver Creek Random	20	363	Cottonwood SBSF	4
312	Highlands	21	364	Chestnut SBSF	4
313	Choctaw Chopped	15	365	Silverdale SBSF	5
314	Cameron Blue Ledge Squares and Rectangles	17	366	Courtland Low Rise	5
315	Rattlers	18	367	Plaza Gray SBSF	5
316	Sebastian Squares and Rectangles Chopped	15	368	Anasazi Sliver	20
317	McGregor Lake Ledge	22	369	Granite Ledge	8
318	Burgundy	17	370	Colorado Brown Squares and Rectangles	13
320	San Miguel Cladding	11	371	Solaris Custom Sawn	15
321	Mountain Green Ledge	7	372	Sweetwater	9
322	Val's Quartzite	12	373	Loon Lake Ledge	23
323	Colorado Brown Watermark Cladding	13	374	San Pietro	25
324	Mountain Ash Square Shouldered	7	376	Colorado Buff Stained Strip	9
325	Palmyra	21	392	Oklahoma Brown Straight Edge	16
326	Cassia Blend	12	375	Caras	19
327	Aspen Granite	8	377	Colorado Buff Strip	9
328	Rancho Moss	14	378W	Cottonwood Limestone Tumbled	4
329	Oklahoma Mountain Brick Rock	17	379W	Mountain Ash Veneer	7
330	Ark Moss Veneer	14	380W	Idaho Black Granite	8
331	Cameron Brown Stripstone	16	381W	Southern Blend	24
332	Oklahoma Brown Chopped	16	382W	Colorado Buff Drywall	9
333	San Miguel/ Santa Fe Blend	11	383W	Ashland Rubble Smear Joint	5
334	Ashland Cut Full Color	5	384W	River Rock	24
335	Burlwood	17	385W	Colorado Brown Random Smear Joint	13
337	Winterset Chopped	4	386	Hand Picked Light Grey	4
338	Colorado Rose Strip	9	387W	Highlands Parkitecture	20
339	Aspen Bark Sandstone	10	388W	Mountain Ash Parkitecture	7
340	Sebastian Squares and Rectangles	15	389W	Ark Moss Strip Parkitecture	14
341	Sienna Buff & Grey	24	390W	Idaho Black Granite Parkitecture	8
342	Colorado Buff Stained and Chopped	9	NP	Ashland Cut Hand Picked Blend	24
343	Colorado Brown Traditional	13	405	Mountain Brick Chopped	18
344	Sagebrush	20	406	Storm Mountain Full Ledge	12
345	Mountain Ledge Sandstone	15	407	Honey Wheat Chopped	18
346	Cabinet Gore Ledge	23	408	Blue Sky Chopped	18
347	Honey Wheat Tumbled TV	15	409	Deer Valley Ledge	18
349	Timber Ridge Sandstone	10	410	Deep Ocean Blend	24
350	Pima Gold Sandstone	13	411	Hudson Shell Gray	6
351	Silver Heritage Ledge and Jumpers	12	412	Blue Sky Sawn Pattern	18
352	Honey Classic Ledge	12	413	Hudson Shell Buff	6
353	Gold Sawn Ashlar Quartzite	12	414	Verona	16



Table of Contents Paving Panels

Panel #	Paving Panels	Page
1	Colorado Rose	26
2	Pennsylvania Full Color	28
3	Colorado Buff Random	26
4	Pioneer Quartzite Selects	26
5	Tennessee Blue/Gray	28
7	San Miguel	26
8	Flagg Creek Steppers	27
9	Pennsylvania Blue Pattern	28
10	Colorado Buff Dimensional	27
11	Flagg Creek Full Size	28
13	Black Hills	27
15	Klondike Gold	27
16	San Pietro Bushhammer	25
17	San Pietro Silk	25
18	San Pietro Sandblast	25
19	San Pietro Flamed	25
20	Glacier Gray	26
	San Pietro Combined	25

Limestone



#337 Winterset Chopped **TV**



TV #378W Cottonwood Tumbled



#362 Flint Hills Mottled **TV**



TV #364 Chestnut SBSF



#363 Cottonwood SBSF **TV**



TV #386 Hand Picked Light Gray

TV indicates that this material is available in a Thin Stone Format

RM indicates that this material is Regional (within 500 miles of our Stone Yard)

Samples of natural stone are indicative of color, markings and general texture of the variety named.

The amount of variation is subject to the type of material, size and current quarry conditions.

Please note that sample panels may be located at either our Wolcott Office or Gypsum Stone Yard.

Please call in advance for locations of specific panels.



Limestone



#365 Silverdale SBSF **TV**



TV #366 Courtland Low Rise



#367 Plaza Gray SBSF **TV**



TV #334 Ashland Cut Full Color



#355 Flint Hills Gray **TV**



#383W Ashland Rubble Smear Joint

TV indicates that this material is available in a Thin Stone Format

RM indicates that this material is Regional (within 500 miles of our Stone Yard)

Samples of natural stone are indicative of color, markings and general texture of the variety named.

The amount of variation is subject to the type of material, size and current quarry conditions.

Please note that sample panels may be located at either our Wolcott Office or Gypsum Stone Yard.

Please call in advance for locations of specific panels.

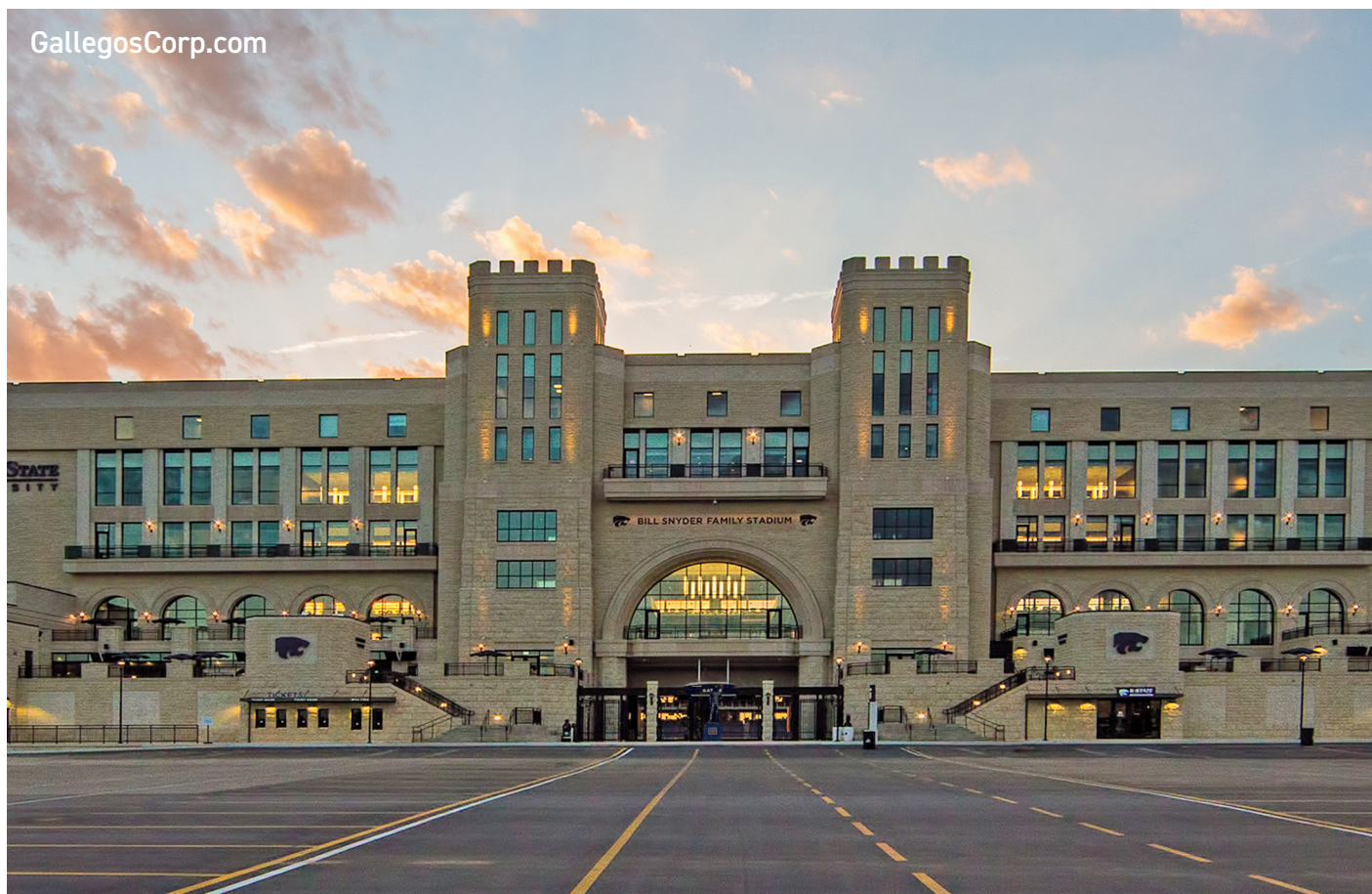
Limestone



#411 Hudson Shell Gray



#413 Hudson Shell Buff **TV**



TV indicates that this material is available in a Thin Stone Format

RM indicates that this material is Regional (within 500 miles of our Stone Yard)

Samples of natural stone are indicative of color, markings and general texture of the variety named.

The amount of variation is subject to the type of material, size and current quarry conditions.

Please note that sample panels may be located at either our Wolcott Office or Gypsum Stone Yard.

Please call in advance for locations of specific panels.



Granite



#388W Mountain Ash Parkitecture



#379W Mountain Ash Veneer



#324 Mountain Ash Square Shouldered



#321 Mountain Green Ledge



Mountain Ash Veneer Granite

TV indicates that this material is available in a Thin Stone Format

RM indicates that this material is Regional (within 500 miles of our Stone Yard)

Samples of natural stone are indicative of color, markings and general texture of the variety named.

The amount of variation is subject to the type of material, size and current quarry conditions.

Please note that sample panels may be located at either our Wolcott Office or Gypsum Stone Yard.

Please call in advance for locations of specific panels.

Granite



#390W Idaho Black Parkitecture **RM**



RM TV #380W Idaho Black Granite



#354 Granite Squares and Rectangles **TV**



TV #369 Granite Ledge



#327 Aspen Granite **RM**



Mountain Ash Veneer Granite

TV indicates that this material is available in a Thin Stone Format
RM indicates that this material is Regional (within 500 miles of our Stone Yard)

Samples of natural stone are indicative of color, markings and general texture of the variety named.
 The amount of variation is subject to the type of material, size and current quarry conditions.
 Please note that sample panels may be located at either our Wolcott Office or Gypsum Stone Yard.
 Please call in advance for locations of specific panels.

Colorado Sandstone



#338 Colorado Rose Strip **TV RM**



RM TV #377 Colorado Buff Strip



#372 Sweetwater **TV RM**



RM TV #376 Colorado Buff Stained Strip



#382W Colorado Buff Drywall **RM**



RM TV #342 Colorado Buff Stained and Chopped

TV indicates that this material is available in a Thin Stone Format

RM indicates that this material is Regional (within 500 miles of our Stone Yard)

Samples of natural stone are indicative of color, markings and general texture of the variety named.

The amount of variation is subject to the type of material, size and current quarry conditions.

Please note that sample panels may be located at either our Wolcott Office or Gypsum Stone Yard.

Please call in advance for locations of specific panels.

Colorado Sandstone



#339 Aspen Bark Sandstone **TV RM**



RM TV #349 Timber Ridge Sandstone



#356 Flagg Creek Squares and Rectangles **TV RM**



RM TV #358 Flagg Creek Ledge Stained and Chopped



Colorado Buff Strip Thin Veneer

TV indicates that this material is available in a Thin Stone Format

RM indicates that this material is Regional (within 500 miles of our Stone Yard)

Samples of natural stone are indicative of color, markings and general texture of the variety named.

The amount of variation is subject to the type of material, size and current quarry conditions.

Please note that sample panels may be located at either our Wolcott Office or Gypsum Stone Yard.

Please call in advance for locations of specific panels.



New Mexico Sandstone



San Miguel



RM #320 San Miguel Cladding



RM TV #333 San Miguel/ Santa Fe Blend

TV indicates that this material is available in a Thin Stone Format

RM indicates that this material is Regional (within 500 miles of our Stone Yard)

Samples of natural stone are indicative of color, markings and general texture of the variety named.

The amount of variation is subject to the type of material, size and current quarry conditions.

Please note that sample panels may be located at either our Wolcott Office or Gypsum Stone Yard.

Please call in advance for locations of specific panels.

Quartzite



#322 Vals Quartzite



#351 Silver Heritage Ledge and Jumpers



#352 Honey Classic Ledge **TV**



TV #353 Gold Sawn Ashlar Quartzite



#326 Cassia Blend



TV #406 Storm Mountain Full Ledge

TV indicates that this material is available in a Thin Stone Format

RM indicates that this material is Regional (within 500 miles of our Stone Yard)

Samples of natural stone are indicative of color, markings and general texture of the variety named.

The amount of variation is subject to the type of material, size and current quarry conditions.

Please note that sample panels may be located at either our Wolcott Office or Gypsum Stone Yard.

Please call in advance for locations of specific panels.



Colorado Brown Stone



#370 Colorado Brown Squares and Rectangles **TV RM**



RM #323 Colorado Brown Watermark Cladding



#385W Colorado Brown Random **TV**



RM TV #350 Pima Gold Sandstone



Colorado Brown



RM TV #343 Colorado Brown Traditional

TV indicates that this material is available in a Thin Stone Format

RM indicates that this material is Regional (within 500 miles of our Stone Yard)

Samples of natural stone are indicative of color, markings and general texture of the variety named.

The amount of variation is subject to the type of material, size and current quarry conditions.

Please note that sample panels may be located at either our Wolcott Office or Gypsum Stone Yard.

Please call in advance for locations of specific panels.

Moss Rock



#330 Ark Moss **TV RM**



RM #389W Ark Moss Strip Parkitecture



#302 Alpina Moss **TV RM**



TV #328 Rancho Moss

TV indicates that this material is available in a Thin Stone Format

RM indicates that this material is Regional (within 500 miles of our Stone Yard)

Samples of natural stone are indicative of color, markings and general texture of the variety named.

The amount of variation is subject to the type of material, size and current quarry conditions.

Please note that sample panels may be located at either our Wolcott Office or Gypsum Stone Yard.

Please call in advance for locations of specific panels.



Oklahoma & Arkansas Stones



#345 Mountain Ledge Sandstone **TV**



TV #313 Choctaw Chopped



TV #347 Honey Wheat Tumbled



TV #340 Sebastian Squares & Rectangles



#371 Solaris Custom Sawn



#316 Sebastian Squares and Rectangles Chopped

TV indicates that this material is available in a Thin Stone Format

RM indicates that this material is Regional (within 500 miles of our Stone Yard)

Samples of natural stone are indicative of color, markings and general texture of the variety named.

The amount of variation is subject to the type of material, size and current quarry conditions.

Please note that sample panels may be located at either our Wolcott Office or Gypsum Stone Yard.

Please call in advance for locations of specific panels.

Oklahoma & Arkansas Stones



#332 Oklahoma Brown Chopped **TV**



#331 Cameron Brown Stripstone **TV**



#301 Sebastian Sawn **TV**



TV #392 Oklahoma Brown Straight Edge



#414 Verona

TV indicates that this material is available in a Thin Stone Format

RM indicates that this material is Regional (within 500 miles of our Stone Yard)

Samples of natural stone are indicative of color, markings and general texture of the variety named.

The amount of variation is subject to the type of material, size and current quarry conditions.

Please note that sample panels may be located at either our Wolcott Office or Gypsum Stone Yard.

Please call in advance for locations of specific panels.



Oklahoma & Arkansas Stones



#329 Oklahoma Mountain Brick Rock **TV**



#318 Burgundy



#314 Cameron Blue Ledge Squares and Rectangles **TV**



TV #335 Burlwood



TV indicates that this material is available in a Thin Stone Format

RM indicates that this material is Regional (within 500 miles of our Stone Yard)

Samples of natural stone are indicative of color, markings and general texture of the variety named.

The amount of variation is subject to the type of material, size and current quarry conditions.

Please note that sample panels may be located at either our Wolcott Office or Gypsum Stone Yard.

Please call in advance for locations of specific panels.

Oklahoma & Arkansas Stones



#405 Mountain Brick Chopped



#407 Honey Wheat Chopped



#408 Blue Sky Chopped



#412 Blue Sky Sawn Pattern



#315 Rattlers



#409 Deer Valley Ledge

TV indicates that this material is available in a Thin Stone Format

RM indicates that this material is Regional (within 500 miles of our Stone Yard)

Samples of natural stone are indicative of color, markings and general texture of the variety named.

The amount of variation is subject to the type of material, size and current quarry conditions.

Please note that sample panels may be located at either our Wolcott Office or Gypsum Stone Yard.

Please call in advance for locations of specific panels.



Telluride Blends



#305 Adobe **TV RM**



#375 Caras **TV RM**



#310 Skyline **TV RM**



Telluride Graystone



RM TV #309 Graystone

TV indicates that this material is available in a Thin Stone Format

RM indicates that this material is Regional (within 500 miles of our Stone Yard)

Samples of natural stone are indicative of color, markings and general texture of the variety named.

The amount of variation is subject to the type of material, size and current quarry conditions.

Please note that sample panels may be located at either our Wolcott Office or Gypsum Stone Yard.

Please call in advance for locations of specific panels.

Telluride Blends



#387W Highlands Parkitecture **RM**



RM TV #308 Desert Tortoise



#311 Beaver Creek Random **TV RM**



RM TV #368 Anasazi Sliver



#304 Goldstone **TV RM**



RM TV #344 Sagebrush

TV indicates that this material is available in a Thin Stone Format

RM indicates that this material is Regional (within 500 miles of our Stone Yard)

Samples of natural stone are indicative of color, markings and general texture of the variety named.

The amount of variation is subject to the type of material, size and current quarry conditions.

Please note that sample panels may be located at either our Wolcott Office or Gypsum Stone Yard.

Please call in advance for locations of specific panels.



Telluride Blends



#303 Northstar **TV** **RM**



RM **TV** #325 Palmyra



#312 Highlands **TV** **RM**



RM **TV** #306 Rico Stack



Telluride Highlands Chopped

TV indicates that this material is available in a Thin Stone Format

RM indicates that this material is Regional (within 500 miles of our Stone Yard)

Samples of natural stone are indicative of color, markings and general texture of the variety named.

The amount of variation is subject to the type of material, size and current quarry conditions.

Please note that sample panels may be located at either our Wolcott Office or Gypsum Stone Yard.

Please call in advance for locations of specific panels.

Montana Stones



McGregor Lake Ledge



#357 McGregor Lake Ledge



TV #317 McGregor Lake Ledge

TV indicates that this material is available in a Thin Stone Format

RM indicates that this material is Regional (within 500 miles of our Stone Yard)

Samples of natural stone are indicative of color, markings and general texture of the variety named.

The amount of variation is subject to the type of material, size and current quarry conditions.

Please note that sample panels may be located at either our Wolcott Office or Gypsum Stone Yard.

Please call in advance for locations of specific panels.



Montana Stones



#361 Moose Mountain **TV**



TV #346 Cabinet Gore Ledge



#360 Castle Rock Blocky Ledge **TV**



TV #373 Loon Lake Ledge



#359 Moonlight Basin **TV**



Moonlight Basin Squares and Rectangles

TV indicates that this material is available in a Thin Stone Format

RM indicates that this material is Regional (within 500 miles of our Stone Yard)

Samples of natural stone are indicative of color, markings and general texture of the variety named.

The amount of variation is subject to the type of material, size and current quarry conditions.

Please note that sample panels may be located at either our Wolcott Office or Gypsum Stone Yard.

Please call in advance for locations of specific panels.

Stone Blends



#NP Ashland Cut Hand Picked Blend



RM TV #341 Sienna Buff & Grey



#410 Deep Ocean Blend



RM #381W Southern Blend



RM #384W River Rock

TV indicates that this material is available in a Thin Stone Format

RM indicates that this material is Regional (within 500 miles of our Stone Yard)

Samples of natural stone are indicative of color, markings and general texture of the variety named.

The amount of variation is subject to the type of material, size and current quarry conditions.

Please note that sample panels may be located at either our Wolcott Office or Gypsum Stone Yard.

Please call in advance for locations of specific panels.



Italian Sandstone Wall Panels and Flooring



#374 San Pietro Wall



San Pietro Combined



#16 San Pietro Bushhammer



#17 San Pietro Silk



#18 San Pietro Sandblast



#19 San Pietro Flamed

TV indicates that this material is available in a Thin Stone Format

RM indicates that this material is Regional (within 500 miles of our Stone Yard)

Samples of natural stone are indicative of color, markings and general texture of the variety named.

The amount of variation is subject to the type of material, size and current quarry conditions.

Please note that sample panels may be located at either our Wolcott Office or Gypsum Stone Yard.

Please call in advance for locations of specific panels.

Floor Panels



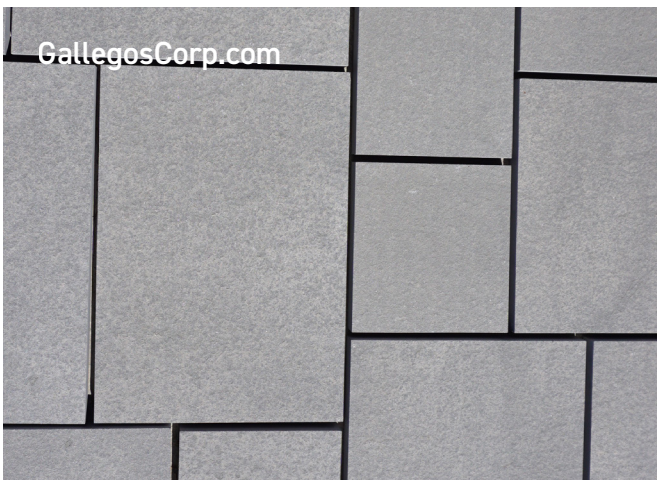
#1 Colorado Rose **RM**



RM #7 San Miguel



#3 Colorado Buff Random **RM**



#20 Glacier Gray



#4 Pioneer Quartzite Selects **RM**

TV indicates that this material is available in a Thin Stone Format

RM indicates that this material is Regional (within 500 miles of our Stone Yard)

Samples of natural stone are indicative of color, markings and general texture of the variety named.

The amount of variation is subject to the type of material, size and current quarry conditions.

Please note that sample panels may be located at either our Wolcott Office or Gypsum Stone Yard.

Please call in advance for locations of specific panels.



Floor Panels



#13 Black Hills



#8 Flagg Creek Steppers



#15 Klondike Gold



RM #10 Colorado Buff Dimensional



TV indicates that this material is available in a Thin Stone Format

RM indicates that this material is Regional (within 500 miles of our Stone Yard)

Samples of natural stone are indicative of color, markings and general texture of the variety named.
The amount of variation is subject to the type of material, size and current quarry conditions.
Please note that sample panels may be located at either our Wolcott Office or Gypsum Stone Yard.
Please call in advance for locations of specific panels.

Floor Panels



#9 Pennsylvania Blue Pattern



#2 Pennsylvania Full Color



#11 Flagg Creek Full Size



#5 Tennessee Blue/Gray



TV indicates that this material is available in a Thin Stone Format

RM indicates that this material is Regional (within 500 miles of our Stone Yard)

Samples of natural stone are indicative of color, markings and general texture of the variety named.

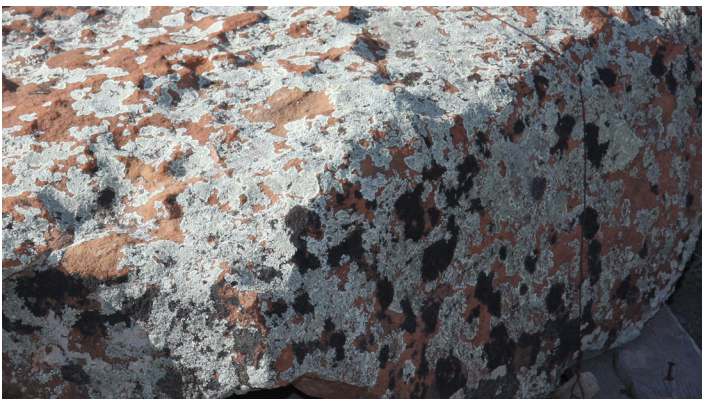
The amount of variation is subject to the type of material, size and current quarry conditions.

Please note that sample panels may be located at either our Wolcott Office or Gypsum Stone Yard.

Please call in advance for locations of specific panels.



Boulders & Slabs



TV indicates that this material is available in a Thin Stone Format

RM indicates that this material is Regional (within 500 miles of our Stone Yard)

Samples of natural stone are indicative of color, markings and general texture of the variety named.

The amount of variation is subject to the type of material, size and current quarry conditions.

Please note that sample panels may be located at either our Wolcott Office or Gypsum Stone Yard.

Please call in advance for locations of specific panels.

Boulders & Slabs



Arkansas Boulders/Beams
Valley Moss
New Mexico Slabs
Colorado Buff Slabs

Telluride
Mountain Ash Boulders/Selects
Oklahoma Beams/Boulders/Blocky
Siloam



Dimensional Stone



Cameron Blue



Tennessee Blue



Colorado Rose



San Pietro



Flagcreek Dimensional



Pennsylvania Blue

Granite Sandstone Limestone Quartzite Slate Bluestone Marble

Dimensional Stone



Cottonwood Limestone



Cameron Brown



Colorado Buff



San Miguel



TV indicates that this material is available in a Thin Stone Format

RM indicates that this material is Regional (within 500 miles of our Stone Yard)

Samples of natural stone are indicative of color, markings and general texture of the variety named.

The amount of variation is subject to the type of material, size and current quarry conditions.

Please note that sample panels may be located at either our Wolcott Office or Gypsum Stone Yard.

Please call in advance for locations of specific panels.



Technical Information

Explanation of Natural Thin Stone Veneer

Full Dimensional Stone = 3 - 5 inches depth and 40 - 73 lbs./sq ft

Natural Thin Veneer = 1¼ nominal inch (generally), 15 lbs./sq ft or less

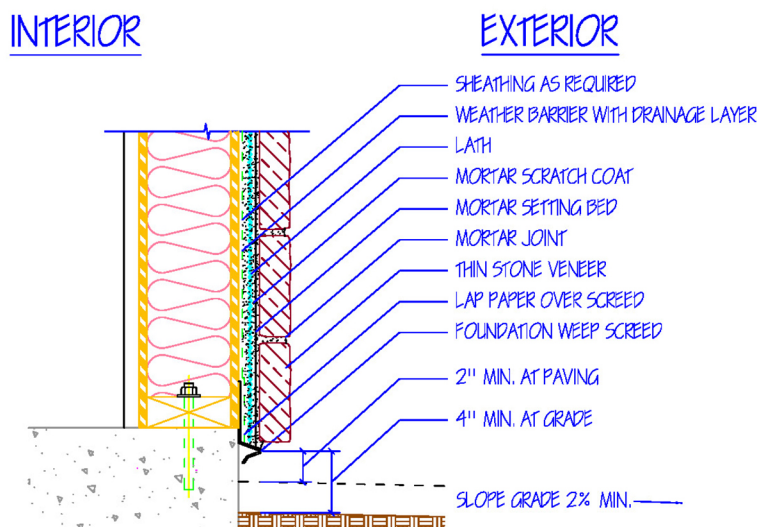
- In order to be considered a 2015 Natural Thin Veneer, the weight of the stone needs to be less than 15 lbs/sq ft as described in the 1997 Uniform Building Code.
- In order for this to be accomplished, the stone needs to be approximately 1¼ inches thick; stone density will determine final thickness.
- Natural Thin Veneer is typically less than ½ (or more) the thickness of Full Thickness Veneer. In addition, the weight of the Natural Thin Veneer can be just a fraction of the Full Thickness Veneer, sometimes 75% less.

Advantages of Natural Thin Stone Veneer

- Freeze/Thaw Cycle
- Shapes/Textures
- Durability
- Low maintenance
- It's the real thing – others try to imitate look and feel
- Non-patterned
- Available in most Natural Stone – limestone, granite, bluestone, sandstone, mica and others
- No support ledge required – ideal for remodeling projects
- Can be applied directly over brick and other rigid structures.

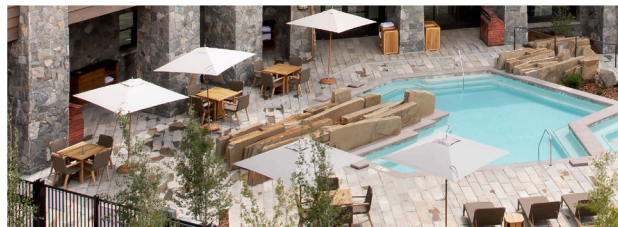
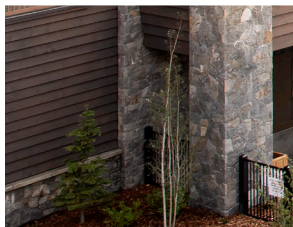
Parkitecture

- Requires a oversized ledge to support the stone.
- The base of the wall can be as deep as 24"



Notes

Notes



STONE SALES

1097 Spring Creek Road
Gypsum, CO 81637

970-524-4322
StoneSales@GallegosCorp.com

GallegosCorp.com
800-GALLEGOS