

# LUXE

THE COLORADO HOME REDEFINED™



LUXEMAGAZINE.COM



74

\$ 6.95 US FALL

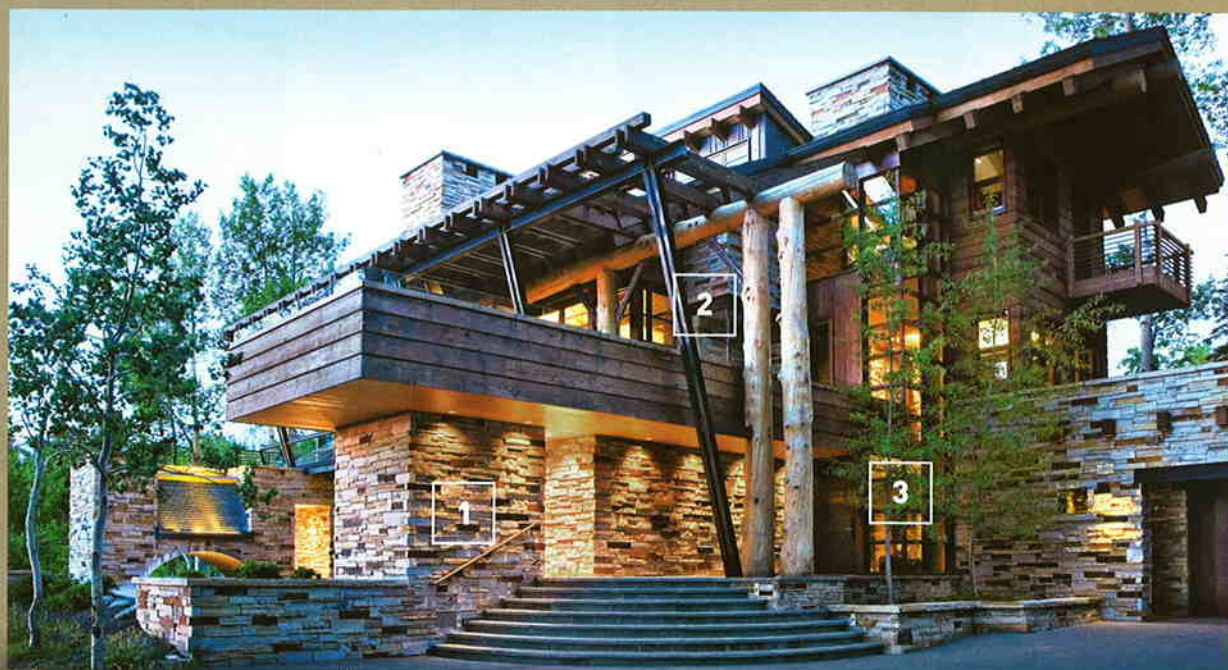
## GLOBAL THOUGHT

ON PAGES  
238-249

ARCHITECT Tommy Hein Architects: Telluride, CO: 970.728.1220

BUILDER Tandem, Inc.: Telluride, CO: 970.728.3209

INTERIOR DESIGNER Stephen Farish Interiors: Telluride, CO: 970.728.9226



**1 STONE WORK**  
Aplin Masonry  
of Telluride  
Telluride, CO  
970.728.5512

**2 WINDOWS**  
Dynamic Window  
and Door  
Abbotsford, BC  
800.661.8111

**3 DOORS**  
Dynamic Window  
and Door  
Abbotsford, BC  
800.661.8111

**COUNTERTOPS**

Gallegos Corp.  
Vail, CO  
970.926.3737

**FIREPLACE SCREEN**

Armored Fabrication  
Ridgway, CO  
970.626.4151

**INTERIOR WALL STONE**

Aplin Masonry of Telluride  
Telluride, CO  
970.728.5512

**JAPANESE DOORS**

Western Mountain Millworks  
Norwood, CO  
970.708.0431

**MASTER BATHTUB**

Ridgway Plumbing  
and Heating  
Ridgway, CO  
970.626.5085

**LAP POOL**

Colorado Poolscapes  
Glenwood Springs, CO  
970.945.8775





## GLOBAL THOUGHT

WRITTEN BY NANCY CLARK

PHOTOGRAPHY BY CHRISTOPHER MARONA

TUCKED INTO TELLURIDE'S RUGGED PEAKS STANDS A SOARING HOME ON TWO PIERS SUPPORTING THE STEEL, log and timber framing hanging between them and extending beyond them. Built as if an avatar of new thought has been released on the historic western town, the structure breaks free of the mindset that homes at this altitude must reflect the expected—miners' legacies and the cowboy spirit. Instead, this Japanese-influenced home is an organic tribute to, of all things, Buddha.

The owners, who reside in California, envisioned a calming getaway configured to nourish and sustain them while they're on retreat from their hectic schedules. They insisted that their team of architect, contractor and designer accompany them to the top of East Gros Ventre Butte in Jackson Hole, Wyoming, to see the ultradeluxe Amangani Resort, says home builder Tim Hild of Tandem, Inc. Immediately everyone on the project caught the vision. "This is," says Hild, "one of the most unique homes in the mountain region."

The structure is a thinking man's (and woman's) home. Telluric masses of concrete and stone rise up out of the earth trumpeting the design, one that offers thoughtful, reflective space for meditation. From the vantage point of the southwest-facing glass wall, the panorama of surrounding peaks and mountain ranges inspire expanded views on the world at large.

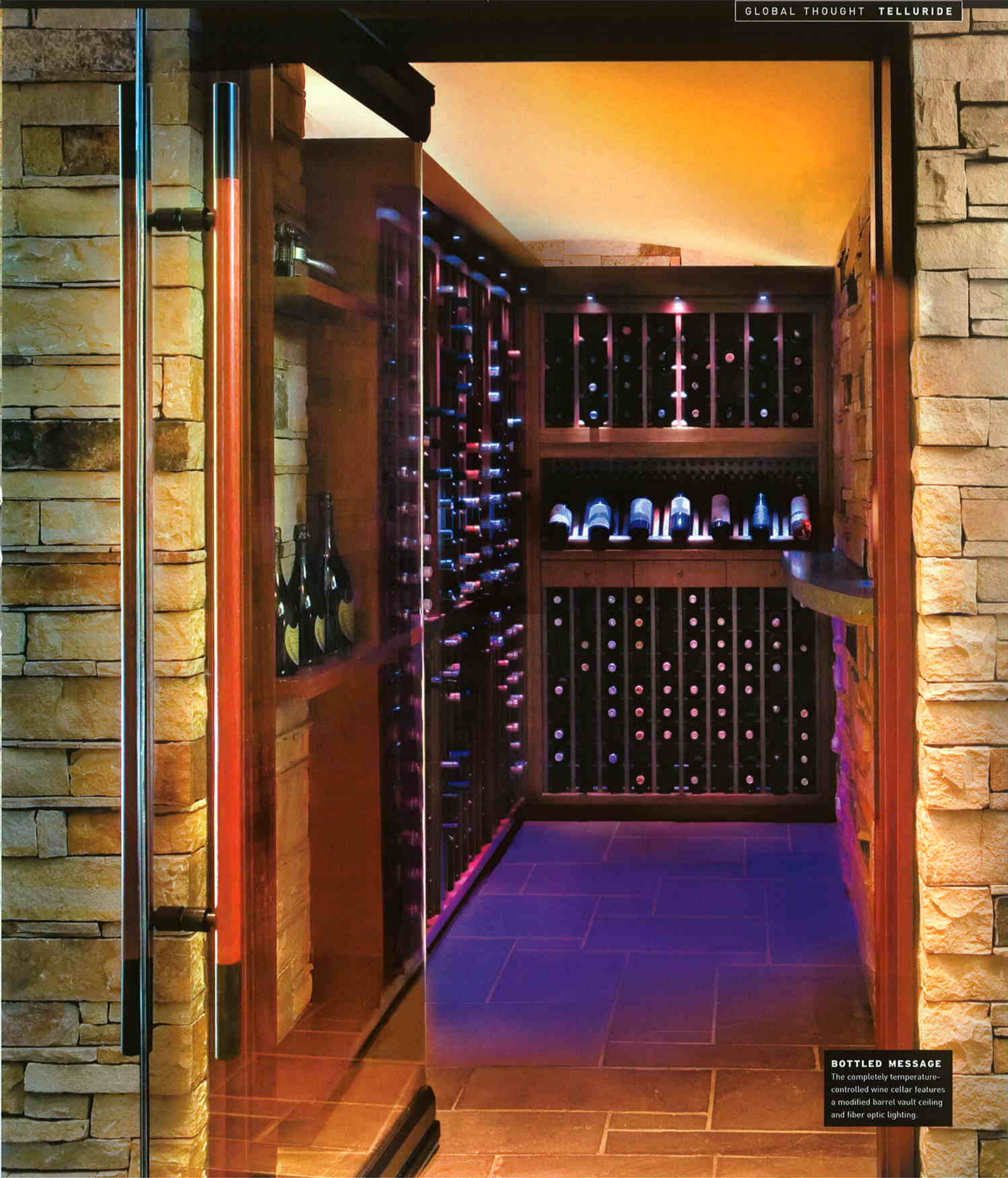
Monumental timber pillars are in fact a hallmark of traditional Japanese construction and architect Tommy Hein, known for his strong geometries in all of his plans, applied his best to this particular home. Using purposeful Japanese tradition underscored by two architectural influences—Frank Lloyd Wright and the National Parks style—the result is a livable architectural sculpture.

<b>ARCHITECT</b> Tommy Hein	<b>HOME BUILDER</b> Tim Hild	
<b>INTERIOR DESIGNER</b> Stephen Farish		
<b>BEDROOMS</b> 5	<b>BATHROOMS</b> 7	<b>SQUARE FEET</b> 6,000



**SACRED SPACE**

Designer Stephen Farish used a clean, modern look influenced by Japanese traditions.



**BOTTLED MESSAGE**  
The completely temperature-controlled wine cellar features a modified barrel vault ceiling and fiber optic lighting.

**INTOXICATING**

A relaxing retreat, the ritual of the Japanese bath is redefined to commune with nature in this private space.



CONTINUED FROM PAGE 242

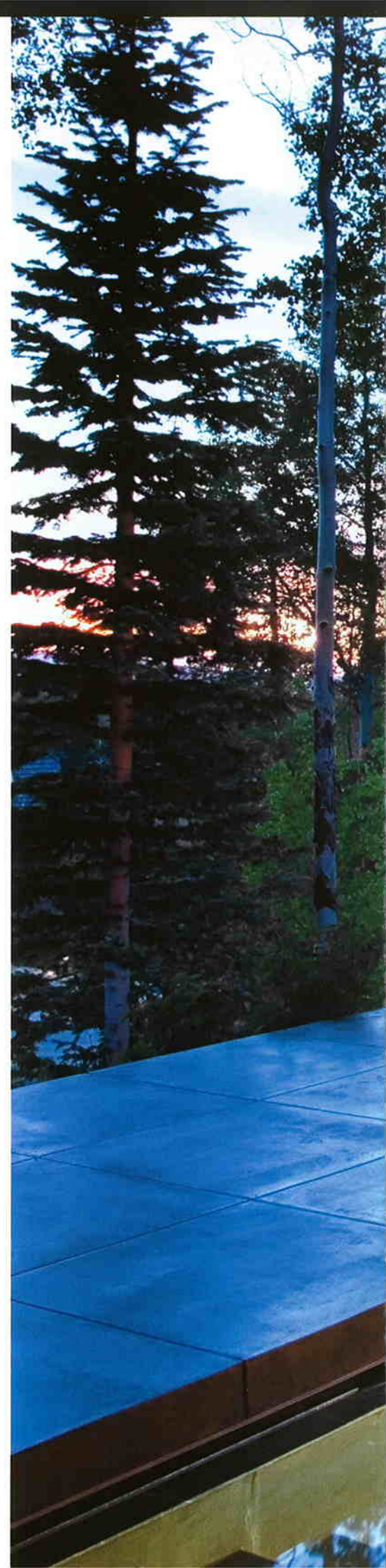
"People are drawn here for the views," adds Farish, explaining why the use of space is oriented toward those vistas. To protect the views from the inside-out, Farish insists upon automatic blinds that can be pulled back entirely, exposing nature to the interior. The Japanese influence of this home extends beyond its footprint by making use of "borrowed scenery," in particular, the impressive panorama. This practice of borrowing scenic beauty as a background to the garden underfoot is a purely Eastern philosophy passed down from *sensei* to apprentice. The integration of the landscape surrounding this peaceful home with the mountains beyond its boundaries couldn't be better suited than in a western place called Telluride. **L**





CONTINUED FROM PAGE 242

"People are drawn here for the views," adds Farish, explaining why the use of space is oriented toward those vistas. To protect the views from the inside-out, Farish insists upon automatic blinds that can be pulled back entirely, exposing nature to the interior. The Japanese influence of this home extends beyond its footprint by making use of "borrowed scenery," in particular, the impressive panorama. This practice of borrowing scenic beauty as a background to the garden underfoot is a purely Eastern philosophy passed down from *sensei* to apprentice. The integration of the landscape surrounding this peaceful home with the mountains beyond its boundaries couldn't be better suited than in a western place called Telluride. **L**





**BRIDGING CULTURES**  
The geometry of the ornamental stonework over the lap pool is enhanced in the reflection of the yellow underbelly of the bridge.